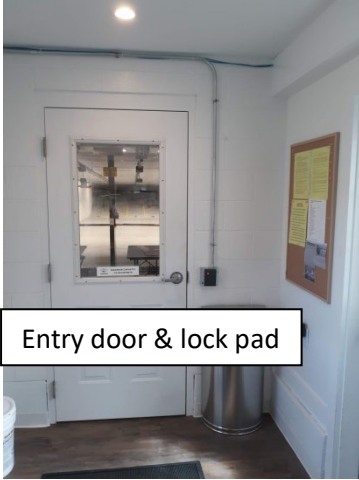


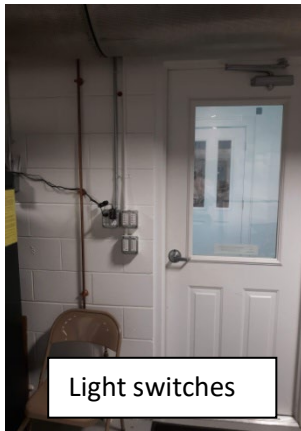
CCSSEF Indoor Range Member's Range Operation Instructions

All Indoor Range Members should be familiar with the Indoor Range Rules published in the CCSSEF Standard Operating Procedures (SOP). These Indoor Range rules are posted just outside the Indoor Range entry door and on the gun safe just inside the Indoor Range.



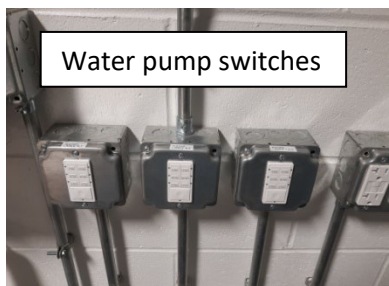
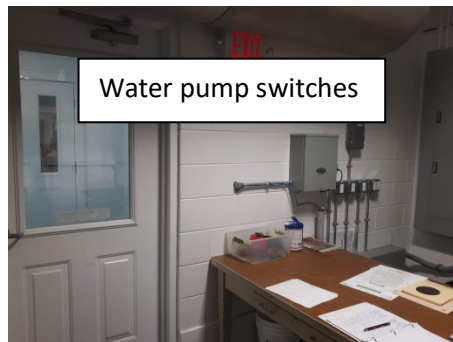
Entry Door Lock: Indoor Range Members should have already gotten their Member access card. Slowly swipe your card across the door lock pad surface. The indicator light on the pad will change to green and you should be able to pull the door open. Remember to keep your access card on your person (as opposed to attaching it to your bag) so if you step out of the range to go to your car or in the meeting house and the door locks, you'll be able to get back in.

Lights: There are 4 timed light switches just inside the entry door. These operate the overhead lights near the doorway, the shooting booth lights and the left and right side down-range lights. Set them for an hour or two (whatever time you think you're going to be in the range).



Bullet Impact Water System: The 3 switches for the water system are on the rear wall near the electrical system main breaker panel. These timed switches operate pumps for points 1-2-3, 4&5 and 6&7. The water system is required for all center fire calibers. Determine which firing point you'll be using and turn on the corresponding pump for that point.

Water pump switches V



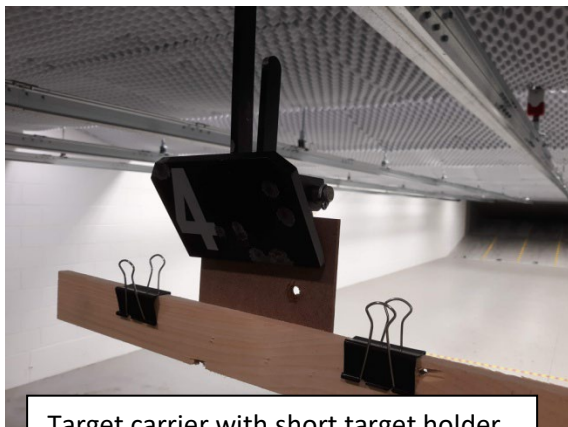
Air System Control: This is the tan colored control box on the left wall closest to the firing line. The timer switch is in the upper right corner of the panel. Turn the dial clockwise to start the Air System. The timer can be turned up to 60 minutes. There is a 90 second delay for the system start-up as the intake damper opens up. You will hear the cooling fans for the electric drives on the left wall when the system starts and runs. Once the system (air pressure in the range) has stabilized, the 3 green lights on the control panel will be on.



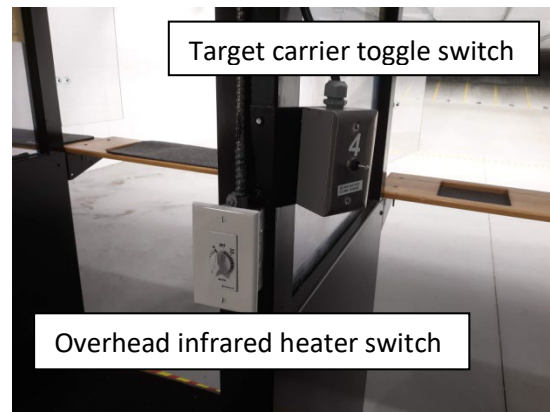
Air system control panel



Target Carriers: Target Carrier operation is controlled by the toggle switch at each firing point. Pressing the toggle switch down sends the target carrier downrange. Lifting the toggle switch up returns the target carrier to the firing line. The minimum distance for targets is 20 feet. This distance is clearly marked with a red & yellow line across the floor and up the walls. The furthest distance the carrier will travel is just over 50 feet to the stop attached to the end of the rail.



Target carrier with short target holder

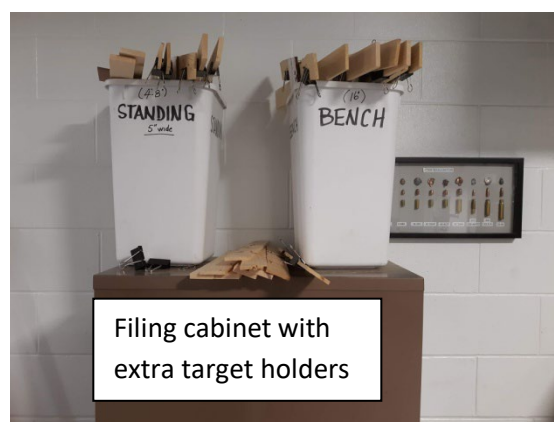


Target carrier toggle switch

Overhead infrared heater switch

Target Holders: There are basically 3 different target holders that get clamped into the target carriers. These are based on the length of the paddle that goes into the clamp. Short holders (4-8 inches long), medium holders (14 inches long) and long holders (46 inches long). Short holders are for shooting standing, mediums are for shooting from the bench and the long holders are for shooting prone or sitting off the floor. Target Holders are either in place in the Target Carrier or on top of the filing cabinet behind firing point #7.

Do NOT shoot at the target holders intentionally. They are for hanging a paper target from.



Individual Firing Point Heaters: There are overhead infrared heaters at each firing point. These are controlled by a timer switch at each firing point.

Brass Clean Up: Be sure to clean up the brass and shot targets from your firing point. You may keep your brass or sweep it up and put it in the BRASS BUCKET in the range. Please do not go forward of the firing line to retrieve brass. Use the long handled floor squeegee.

Leaving The Range: If you are the last person departing the range, please be sure to turn off ALL systems & lights and lock ALL doors to the range, entry hallway and meeting house.